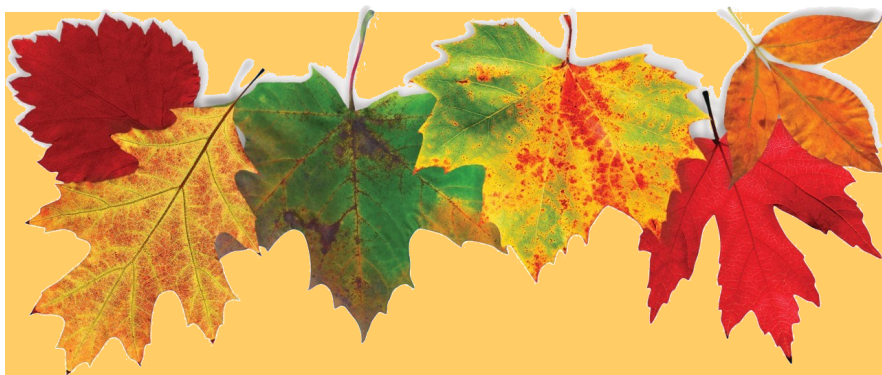




CHRIST
PRESBYTERIAN CHURCH

6565 E. BROADWAY • TUCSON, ARIZONA 85710

November 2019



KIVA

NEWSLETTER



A Word From Our Pastor...

Pastor Steve Melde

There's only one way to thank God for giving you the gift of life....

Give God your life.

Jesus reminds us that the greatest command is to “love the Lord, your God, with your heart, mind, soul, and strength, and your neighbor as yourself.” That means... be all in with God. Let every part of your life be guided by your faith in God through Jesus the Messiah. Think about your decisions. Change your mind and your actions as needed. Be a visible witness of your faith.

That may be challenging in all situations. But we make it so much harder than it needs to be.

This November, ask yourself, “Is what I’m doing, what I’m thinking, how I’m believing, how I’m living, how I’m loving, how I’m behaving...” thanking God?

Then, it will be truly a season of Thanks-giving.

Peace in our journeys,
Pastor Steve Melde



Sunday Worship

We host two worship services every Sunday. You can be a part of them by being here on campus in one of our two worship spaces, or by watching on-line (live or later).

www.cpctucsonaz.org (scroll to the bottom of the home page and you'll find us)

www.facebook.com/ChristPresbyterianTucson (scroll back through our posts)

And be sure to share our worship services to your social media pages. What a great way to invite people to worship with you!

Remember, children are always welcome in worship. We have blue activity bags hanging on the walls for them to use. We also have a professionally staffed nursery for our younger ones, if parents choose that option.

8:30 a.m. Worship in the Fellowship Hall with our Contemporary Band.

It's "light rock" style, with new songs and some of the oldie-goldies that have been given a newer rhythm. We sit at tables so you are welcome to have your coffees or donuts that you bring to have during worship.

10:45 a.m. Worship in the Sanctuary with our Organist and Choirs

It's traditional, but casual. Our sanctuary is in the round, and the Communion Table is in the center. We sit in pews and sing a variety of styles of music as we praise the Lord together.

Remember, we always celebrate communion together on the First Sunday of the Month: November 3rd. Our bread is gluten/dairy/nut/soy free and we use grape juice rather than wine. It is our hope that everyone will be able to fully participate in communion. We welcome children to partake, as well. None of us fully understand the meaning of communion; Jesus invites us all to be at the table with him.

Nominating Committee Update:

We are looking for people with a vision for our church's future. We all know society has changed and church attendance is declining.

The big question is how do we make C.P.C. effective and relevant now and in the future, in bringing people to Christ.

We need a Vision Team who believes that God has high expectations for our church and a vital, future plan for all of us.

We need a team who believe that all our programs should be a part of our vision.

Are you a visionary? Would you be interested in leading or serving on this team? Do you know someone who would?

Please, prayerfully consider serving on the Vision Team.

Peace and Blessings!

Doug Thompson
C.P.C Nominating Chair

Join us on Sunday, November 10, 10 a.m. in Fellowship Hall for a congregational meeting to elect new elders and deacons.



Vision 2020

Sunday, November 3rd: Stewardship Dedication Sunday

Join us as we dedicate our Estimate of Giving Pledges for next year in our campaign, “Vision 2020.” In the month of October we looked back into the history of people who supported the church so that we could have church today. Sunday, November 3rd, we make a commitment to provide church for years to come.

Bring your Estimate of Giving pledge card with you (or mail it in right away if you can’t be with us in person). If you didn’t get one in the mail, just give us a call at the church office, 520-886-5535, and we will get you one to include in the blessing.

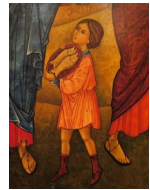
Your Estimate of Giving pledges will guide our Session Leadership Team in specific areas of ministry and mission that we will not only continue from the past, but add to next year.

Together, we do amazing things. Thank you for your incredible generosity to the General Fund of our congregation that enables us to be the church today.... Into 2020... and into the future.

Your Stewardship and Finance Team



Sunday FunDay



9:30 a.m.—10:30 a.m.

November's theme is "Jesus feeding the 5000." We will be experiencing the story through creating baskets using every day, ordinary objects, trying some science experiments where things expand, cooking food to share during fellowship after second service, and playing relay games while learning how God uses ordinary things and ordinary people to do amazing things.

Also in November, we will be practicing for the Christmas Pageant so it is very important that your children come every Sunday if they are planning on being in the Journey to Bethlehem event. Thank you for your support. Robin Gilbert

Children (Pre-K through 5th Grade) begin in Room 6/7 at the west end of the grass quad.

Middle School (6th-8th Grades) begin in Room D of the North Wing

High School (9th-12th Grades) begin in Room C of the North Wing

Youth Ministry News

Our youth, 6th – 12th Grades have two specialized ministries at #CPCTucsonAZ.

Sunday Funday School meets on Sunday mornings between worship services (9:30 a.m. – 10:30 a.m.) This year they are studying characters in the Bible and learning about their faith, so that the youth can become more faithful.

2-4 Youth Fellowship meets on the 2nd and 4th Sundays of the month (6-7:30 p.m.)

November 10-11: An overnight experience at Kitt Peak!

November 24: Zombie Night with Zombie food!



Safety Team

Yes, we have a Safety Team. A group of volunteers has been meeting over the last couple of years to help make sure we are paying attention to safety concerns around our campus. We have added video cameras around the building, made sure our fire extinguishers are working, put up first aid kits around the campus as well as little notes of the church address and phone number. We are investigating smoke detectors (nope, our church doesn't have them), and are looking at our fire escape plan, and are looking to offering another First Aid/CPR training class.

Saturday, November 23: 9 a.m. – 11 a.m., The Tucson Police Department will be here to host an “active shooter” and other safety concerns training. We'd like as many of the congregation to come as possible. When we all are aware of emergency plans, we can better deal with them, if they ever arise. Just call us in the church office to let us know that you can be here with us.

A Note from your Personnel Team

CPC's Personnel Team with Session approval is implementing the Presbytery de Cristo's Sexual Misconduct Policy. We are asking all Leadership, Employees, and Volunteers to read and sign acknowledgement of the policy.

Copies and signature sheets are located in the Sexual Misconduct Policy box in the Office.

Congregational Care Corner

Compassion Connections Ministry



We have 32 VIPP on our roles who are receiving visits, calls, cards, and communion from the 21 volunteers and staff who make up our Compassion Connections Ministry Team. In the month of October we made 20 phone calls, 10 visits, sent 30 note cards, sent 32 birthday cards to the congregation, and shared communion with 8 of our VIPP.

As part of training and orientation, Maureen Harding visited Liz Skelly with me during the month and shared prayer and communion together. Liz is doing pretty well and is appreciative of our visits. She continues to struggle with the affects of a fall that she took some time ago, but her attitude is amazing! Her kids are a great help to her in her daily living.



Please continue to pray for all of our VIPP as well as those who are keeping our folks connected to CPC.

Coffee Talk

Our Coffee Talk program has been discontinued. Thanks you to those who attended and presented.

If you would like to contact me, please leave a message with the church office, 886-5525 and I will return your call, or send me an email, anderson9575@msn.com.

Reminder: If you have an emergency or crisis situation, please contact Pastor Melde at the church office or on his cell.

Christmas Cookies

Each year our Compassion Connections Team puts together Christmas Cookie plates to deliver to our VIPP. We will be doing this after worship on December 15th in the patio room. You can help send greetings and love to our recipients by donating cookies, and/or helping us make up the plates, or even help deliver. You are welcome to join in the joy of giving. Let me know if you would like to help.



Prayer Shawl Ministry will meet in E/F on **Tuesday, November 5, at 1 p.m.** Come check it out. They always have a nice time knitting, crocheting, and visiting. You don't have to attend the monthly meetings to participate. They make shawls that are 18-22 inches wide and about 60 inches long. You may use any pattern or color (blue is the most requested color). Prayer shawls are a blessing to many in our congregation, and other beneficiaries of the missions of the church.

LuAnn Cobb at **721-7338**, would love to answer any questions you have about this ministry. Also, shawl request forms for someone you love, are available in the office or you may contact LuAnn.

Casa de la Luz

Bereavement Support

•Drop-in Bereavement Support Group: First Thursday of each month, Patio Room, 10:00 – 11:30 am; no registration required.

•Individual Counseling: By appointment only; call 520.544.9890



Although it is common to want to find our own way through grief and avoid seeking help, grief support can make a difference. Experiencing the death of a loved one can often overwhelm our ability to cope; some things are simply bigger than we are and require more resources in times of need. Most of us feel strengthened, encouraged, and supported when we learn about grief, understand how grief affects us, identify coping strategies and learn new methods to help ourselves through the grief experience. Casa de la Luz bereavement groups and counseling provide support to the Tucson community, regardless of whether your loved one was cared for by our hospice or not. All groups and counseling are open to the public and are free of charge.

Sessions will be led by Casa de la Luz Bereavement Counselor Christy Noriega, MSW. Christy has a wealth of experience providing resource and therapeutic support for individuals and loved ones during life transitions, including 10 years as a hospice social worker and bereavement counselor.

***Next meeting will be November 7 at 10:00 a.m. in the Patio Room.**

Contact 520.544.9890 for more information.

About Casa de la Luz

Casa de la Luz is the leading provider of end of life care in Southern Arizona. Offering hospice, community palliative care and extensive bereavement services, the breadth of programs at Casa de la Luz extends through every stage at end of life.

The Christian Living Sunday School



Searching for a Biblical Christmas Jonathon Arnpriester

Series begins Sunday, October 27
9:00 a.m. in Room E/F

This video series features Rev. Jonathan Arnpriester and will lead us through Advent into Christmas. The class will watch a video each Sunday and discuss Rev. Arnpriester's sermons. All are welcome!



Halloween Thanks!

Thank you to everyone for helping to make our annual Trunk-Or-Treat such an amazing success. From the donations of candy to help feed the crowds, to the folks who gave out the candy from the trunks of their vehicles, from all in costumes to all with the Haunted Houses.....

... we gave the community a fun, safe evening. (And we invited them to our Journey to Bethlehem worship experience on Sunday, December 22).

Ministry and Mission happen in all sorts of ways.... And Trunk-Or-Treat is one of those times when we get to invite the neighborhood to have some special fun with us.

Annual CPC Craft and Cookie Sale



Saturday, Dec 7 (during the Women's Christmas Brunch)



Sunday, Dec 8 (before and after services)

As always, the CPC Craft Group has been sewing, crafting and assembling vast quantities of beautiful and adorable items for you to purchase for everyone on your Christmas list for family, friend and workmates alike.

From our ever-growing and very popular collections of wrapped Hershey bars, we present Gingerbread cutouts this year. Some favorites from previous years will also be available.

Gingerbread-themed items of all sorts will also be available for you to group as a charming set for those who love them.

Many of the hand-sewn creations rival, even outshine, that of commercial mass-produced merchandise. You must come see to appreciate for yourself!

Don't forget to stop by the cookie table and take a pound or two (or more) along for your holiday gatherings or simply to enjoy the delightfully delicious morsels as you hum along to your favorite Christmas songs.

FYI: The Presbyterian Women of CPC donate the profits from the sale of goods and cookies to various PW Mission ministries.

Bring your favorite method of payment: Cash, Checkbook or Credit Card. We accept it all.

*If you love to bake Christmas cookies and would like to contribute some of them to the Cookie Sale, please contact Lianne Puzzo at 520 -237-6304. She is anxious to speak with you about how you can help.



Flea Market Donation Changes

Thank you for your generous flea market donations and for encouraging your friends, relatives, and neighbors to donate as well. Our pods continue to fill to capacity year after year, contributing to our ever-increasing fundraising results, and allowing for more growth in CPC's mission and outreach abilities.

In general, we say we take anything that doesn't require feeding or watering (except for plants during the final set up days before the event). Due to a variety of reasons however, we've had to place some restrictions on a few items.

In the future please DO NOT donate:

- CRT (big box) TV's, unless accompanied by the required \$30 recycling (disposal) fee
- Full-sized pianos and organs (keyboard types excluded), as they are nearly impossible to sell or pass on to other charities
- Paints and other flammable products as they are dangerous to store over the course of a year

Please Remember to Do:

- If available, please tape or fasten Remotes and/or Keys to donated items.

Donations are accepted throughout Second-Hand weekend hours.

Hours are from **9:00 a.m.-2:00p.m. on Saturday November 9 and 9:30 a.m.-2:00p.m. on Sunday November 10.**

Volunteers are always needed for sorting/cleaning/pricing/storing on this weekend. Lunch is provided.

Hope to see you there!

General ?'s: Pam Cullop 520-271-6678

Donation ?'s: Vera Bare 520-981-1710



Did you know??

All women of the CPC congregation are members of Presbyterian Women and are invited to participate in Bible study and learn about local, national and international mission service projects.

Bible Study for 2019

The 2019 - 2020 Bible Study will be *Love Carved in Stone: A Fresh Look at the Ten Commandments* by Eugenia Gamble. All women are invited to participate!

Next meeting: Chapter 3: "Words of Love: Keep the Sabbath."

Bible Study meets the first Friday of the month. Next meeting will be November 1, 1:00 p.m. to 2:00 p.m. in A/B.

Thank you to all who support the Women's projects!

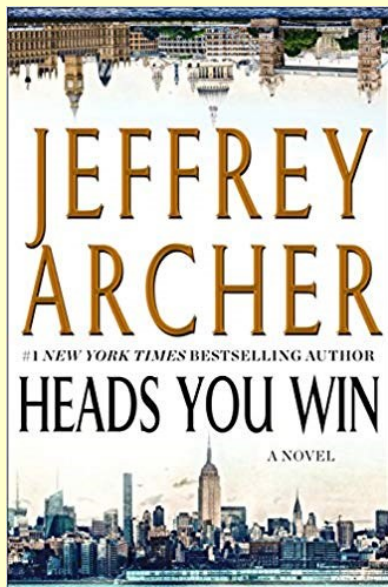
Hermosillo Mexican Children's Hospital: Clean plastic caps of any size are accepted.

Menaul School, Albuquerque, NM: Educational labels with the with the current expiration date on the bottom are accepted.

Ronald McDonald House: is continuing to collect the metal tabs and disinfectant wipes and chemo caps.

Lions Club Glasses: Any used glasses, frames and lenses are appreciated.

Book Club



CPC Bookclub will meet again Tues, November 12 at 1 P.M. in the Patio Room. We will be discussing **Heads You Win** by Jeffrey Archer. Hope you can join us!

Heads You Win by Jeffrey Archer' Leningrad, Russia, 1968: From an early age it is clear that Alexander Karpenko is destined to lead his countrymen. But when his father is assassinated by the KGB for defying the state, Alexander and his mother will have to escape Russia if they hope to survive. At the docks, they have an irreversible choice: board a container ship bound for America or one bound for Great Britain. Alexander leaves the choice to a toss of a coin... In a single moment, a double twist decides Alexander's future. During an epic tale, spanning two continents and thirty years, we follow Alexander through triumph and defeat as he sets out on parallel lives as Alex in New York and Sasha in London. As this unique story unfolds, both come to realize that to find their destiny they must face the past they left behind as Alexander in Russia.



Women's Christmas Brunch ~ 2019

A morning of fellowship and anticipation.

The 8th Annual CPC Women's Christmas Brunch is scheduled for

Saturday, December 7, 9:30-11:30 a.m.,
in CPC Fellowship Hall.

Tickets are \$10 and will be sold on the patio Nov 17, 24, Dec 1.
Please bring cash or make check payable to PW of CPC.

It promises to be a beautiful and blessed morning as we gather to
prepare our hearts and minds for Christmas.

Brunch and socializing between 9:30-10:30 a.m. and a program of
music and an inspirational speaker will occur from 10:30-11:30
a.m.

The CPC Craft & Cookie Sale will be open at 8:30 a.m. as well as
after the brunch.

Attendees are invited to visit the courtyard and Patio Room to
check out the items for sale (cash, check, or credit card).

Wishing you Peace, Love, Hope, and Joy in the season of Advent!

Julie McCrea, WCB Chair, and Pam Cullop, WCB Hostess Coordinator



Haven Totes at CPC –

Helping the food challenged in our neighborhood

CPC is currently supporting 39 students at Kellond Elementary School with weekly food Totes. Something Tote Directors from participating churches were wondering is if there are other children at home that could benefit from a bit more food. Haven Totes, Inc. conducted a survey of all participating families to collect this and other information that could better help provide resources. One thing uncovered is there usually is 1-3 more children at home under the age of 16. Therefore, Haven Totes, Inc. opened a monthly food pantry to better support the Tote families. Donations, grants and the Community Food Bank help support the pantry. Of our 23 families, 10 have signed up to participate in receiving a monthly “shopping trip” to the Food Pantry. Volunteers from the participating churches (CPC included) help run the pantry that is located at Fountain of Life Lutheran Church and is open every Wednesday and two Saturdays a month.

Many volunteers share stories with Board Members and they are true witnessing of God’s work. Such as:

Two little girls that accompanied mom to the pantry had told a volunteer that they were so happy that their mommy would not be worrying about feeding them because of the food they were getting. (Mom was a single working mom)

Thanks CPC for helping these families with your generous donations of food, money, volunteer time, tax credit dollars and participation in fundraisers. You are making a difference in our neighborhood!

Fellowship and Fun

Men's Breakfast

Wednesday, November 20th at 7:30am. Join us for breakfast at Biscuits (7026 E. Broadway). We're studying men in the Bible to learn how to be better men of faith. Men of all ages are invited to join us each Third Wednesday of the month.



Casa Maria Soup Kitchen

CPC has increased our lunch donations to Casa Maria to 200 lunches. Each lunch includes two sandwiches, fruit and cookies. We will make sandwiches on Sunday, November 24th at 9:30 a.m. in Fellowship Hall Kitchen.

Saturday Morning Men's Fellowship

Saturdays, 7:30 am—8:30 am. Enjoy fellowship and sharing experiences and beliefs!

Our November Birthdays!

1 Leslie Courville
1 Charlotte Dye
1 Brooke Fehringer
1 Meghan Koch
3 Kathy Kimball
3 Olivia Smith
4 Jody Watkins
5 Carole Pyter
7 Joyce Coon
7 Jan Marshall
8 Madelyn Doubrava
8 Marilyn McConnell
12 Tina Bentley
13 Dorothy Graham
16 Beth Cullop
19 Lee Blackledge
20 Phil Mendoza
21 Ben Koch
22 Jonathan Alberding
22 Chris Courville
23 Tom Bradley
23 Jack Dimond
23 Murry Short
23 Bob Sundt
24 Cole Gardiner
24 Ava Gardiner
24 Nathan Parkey
25 Elsie Watkins

28 John Couzens
29 Katie Gilbert
30 Cassie Hoke
30 Dale Rosene

*Happy
Birthday!*





CHRIST PRESBYTERIAN CHURCH

6565 E. BROADWAY • TUCSON, ARIZONA 85710

Member of the Presbyterian Church (USA) & Presbytery de Cristo

The Rev. Steven P. Melde, Pastor
(PastorSteveMelde@gmail.com)

Debby Anderson, Coordinator of Congregational Care
(anderson9575@msn.com)

Robin Gilbert, Director of Children's Christian Ed
(robbert77@juno.com)

Katy McNiff, Director of Music
(katy@katymcniff.com)

Lon Bothwell, Facility Manager

Robin Plemmons, Bookkeeper
(bookkeeper@cpctucsonaz.org)

Stella Lopez, Office Manager
(office@cpctucsonaz.org)



Deadlines

Church Office Hours

Monday—Friday

9 a.m.—3 p.m.

(Closed for lunch 12 —1 p.m.)

Phone: 520-886-5535

Fax: 520-886-5686

www.cpctucsonaz.org

KIVA December 2019 Issue
articles due by 12pm on Monday,
November 18, 2019.

Weekly Bulletins and Friday News

Please submit your articles and
requests by Wednesday at noon.

Twitter, Snapchat,



Instagram: **@CPCTucsonAZ**